



VANTAGE

Spring 2007, Volume 28, No. 2

www.mi4hfdtn.org/vantage

Celebrating 4-H's philanthropic heroes

Campaign for 4-H Leadership Gifts

Top five donors of \$50,000 or more for a combined cash giving total of \$3,612,811 from July 1, 2000 to May 31, 2007.

Individuals

- Margaret Marshall Murdoch
- Anonymous
- Mary and Jordan* Tatter
- Alfred and Marsha Harwood
- George and Deanna House

Private Foundations

- The Herbert H. and Grace A. Dow Foundation
- The Rollin M. Gerstacker Foundation
- National Fish and Wildlife Foundation
- The Harry A. and Margaret D. Towsley Foundation
- Michigan Farm and Garden Foundation and the WNF&GA, Michigan Division

Corporations

- Pfizer Animal Health
- Dow Chemical Company Foundation
- DTE Energy Foundation
- Chemical Financial Corporation
- Michigan Farm Bureau and Affiliates

4-H Organizations

- National 4-H Council
- Lenawee County 4-H Council

*In Memoriam

- Alice and Raymond Mahoney
- Thelma and Leonard Burleigh
- Mary Kelsey and Helen Stophlet
- Aileen and Dyle Henning

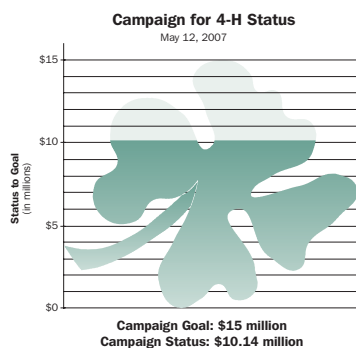
Campaign for 4-H Tops \$10 million

With more than \$10 million raised for support of Michigan 4-H Youth Development, the Michigan 4-H Foundation will bring the *Campaign for 4-H* to a close this year.

The seven-year campaign, which began July 1, 2000, exceeded previous foundation capital campaign totals by more than \$7 million in cash, pledges and planned gifts.

The campaign provided for more than \$3.97 million in restricted and unrestricted 4-H program support; launched eight new 4-H endowed funds totaling \$1.04 million in cash; supported building and land improvements at Kettunen Center; and expanded the size and programming reach of the Michigan 4-H Children's Gardens with gifts totaling \$1.89 million.

The balance of the campaign total was reached with an additional \$3.2 million in planned and pledge gift commitments.



But the real story of the *Campaign for 4-H* are the donors whose generosity provided for significant 4-H program, facilities and endowment growth — donors such as Mary and Jordan Tatter and Alfred and Marsha Harwood.

"I first got connected to 4-H when I was asked to serve on the Berrien County 4-H Foundation board, where I have served for almost 15 years," Mary Tatter said.

"Jordan, as president of Hanson Cold Storage, had provided support locally for 4-H through the business.

"I saw through the years what 4-H did and meant to the young people and adult leaders involved. It taught them persistence — youth would work on a project until they got it right. It taught them dedication and determination, and probably most of all, it taught them integrity through the experiences and guidance of their leaders."

The late Jordan Tatter was a well-known Michigan agricultural leader serving as commissioner and chair of the Michigan Agricultural Commission for many years.

The Tatters made their first *Campaign for 4-H* leadership gift in 2002. Mary has continued that stewardship with annual gifts, and this year she made a second leadership gift and pledge to support the

"It is important for people to realize that only through 4-H philanthropic giving will Michigan 4-H programs continue to grow."

Mary Tatter, Michigan 4-H Foundation trustee

new Founders Fund operational endowment.

In addition to her volunteer service as a trustee of the Berrien County 4-H Foundation, Mary has served as a member of the Michigan 4-H Foundation board of trustees since 1998.

She co-chaired the Michigan 4-H Centennial Celebration committee honoring 100 years of 4-H in America and served as treasurer of the Michigan 4-H Foundation board of trustees.

See Campaign heroes, page 2

What's Inside

Murdoch creates new outdoor garden & endowment	3
Schoen joins foundation board...	3
Foundation awards 4-H innovative county grants.....	5
Kettunen Center arboretum gains new gazebo.....	6
Fishing pier extended at Kett....	6
Collins establishes 4-H horticulture endowment.....	7
Calendar	7
In the News.....	8

Campaign heroes

continued from page 1

“It is important for people to realize that only through 4-H philanthropic giving will Michigan 4-H programs continue to grow,” Tatter said. “And 4-H needs to continue to grow because it gives opportunity for any child anywhere—in both urban and rural urban communities—to participate.”

This is why Al and Marsha Harwood chose to fund a county 4-H scholarship—they’ve personally seen and experienced the opportunities 4-H can provide to young people.

“4-H gave an awful lot to me. Here was a chance to pay back and offer some other kids the same type of opportunity we had,” said Al Harwood about his, his wife’s and his sister Jan Harwood’s decision to establish the Ada May and Webb Harwood Memorial 4-H Endowment Fund, a Washtenaw County 4-H scholarship fund in Al and Jan’s parents’ honor.

Explore, Experience, Achieve:

The Campaign for



“I ended up getting a 4-H scholarship to Michigan State University,” Harwood said. “It was the main reason I ended up going to college.”

What Harwood didn’t get in scholarship support to attend MSU, he made up for working through the year and working three summers as an assistant 4-H club agent in Washtenaw County.

4-H was in many ways a Harwood family tradition.

Ada May Harwood served as a 4-H sewing leader for more than 40 years in Washtenaw County. Webb Harwood was a dairy farmer who was also a 4-H member as a youth.

“My mom and dad met through their 4-H activities,” Harwood said. “My sister and I were both 4-H members. I ended up participating in the 4-H dairy livestock judging team and the state dairy judging team. Our daughter was also very successful



Mary (photo left) and Jordan Tatter and Alfred and Marsha Harwood (photo right) were among the top five individual donors to the Campaign for 4-H.

locally in 4-H and won a couple of trips to state and national events.”

“We [Al and Marsha] started a club here in Livingston County and had 60 kids in the Weekend Do’ers 4-H Club with six to eight parents as co-leaders. Our first year, we kind of opened some eyes with all the awards our kids won,” Harwood said with a chuckle.

Harwood likes to give youth who are committed to doing well the opportunity to do so. He said the 4-H members who have benefited

from the scholarship would have succeeded without the help, but he was glad to ease their way.

“There have been [scholarship recipients] who have done extremely well,” Harwood said. “If you can grab them and push them a little bit harder with a bit of incentive, you know they will do well.”

The Michigan 4-H Foundation will celebrate the impact of all of the donors’ philanthropy to the *Campaign for 4-H* at the Oct. 5 annual membership meeting.



Nearly 200 people attended the 4-H REACT (Reaching Environmental Action and Awareness in Communities) Youth Forum April 30 at Michigan State University. 4-H REACT participants representing nine teams from Midland, Monroe, Oakland, Saginaw and Wayne counties presented their environmental findings at the forum. 4-H REACT was one of the major initiatives funded during the Campaign for 4-H by grants to the Michigan 4-H Foundation from the Dow Chemical Company Foundation and DTE Energy Foundation.



*Nominate a Michigan 4-H
alumnus for the 2008 class of the
4-H Emerald Clover Society!*

Nominations for the 4-H Emerald Clover Society class of 2008 are due Jan. 31, 2008.

The Michigan 4-H Emerald Clover Society reflects the ultimate outcome of 4-H membership—extraordinary use of an individual’s head, heart, hands and health to make our communities, our country and our world a better place in which to live.

Nominee selection is based on evidence of three or more years of Michigan 4-H youth membership, professional and business achievement, leadership in community service and philanthropy, contributions to or impact on American society, and significant leadership and achievement as a 4-H member.

For more details and a nomination packet, visit the Emerald Clover Society Web site at www.mi4hfdtn.org/ecs or call the foundation at (517) 353-6692.

Murdoch creates new outdoor garden & funds endowment

Thanks to a generous gift from Margaret Marshall Murdoch, of Seneca, S.C., the outdoor Michigan 4-H Children's Garden, once known as "the most creative half-acre in America," will become 10 percent larger.

Murdoch's gift will create the **Pete and Sally Smith Schoolyard Demonstration Garden** in memory of her sister and brother-in-law Mary (Sally) Marshall and Donovan (Pete) E. Smith. Murdoch's gift also creates a memorial endowment in their honor that will provide for the ongoing maintenance and renewal of the new schoolyard demonstration garden.

"Sally never lived anywhere without making a garden, and I think Pete just took it for granted that they would always have a garden," Murdoch said.

Both Donovan E. Smith ('29) and Mary Marshall Smith ('28) were Michigan State University graduates. They moved from Michigan to Tennessee and opened and ran the Watts-Bar Resort that featured 44 cottages, a restaurant and many gardens.

"Mary was very good at roses and she loved camellias. She had rose bushes planted at each of the resort cottages. She was also an artist and knew flowers, their foliage and features, and she would paint them," Murdoch said.

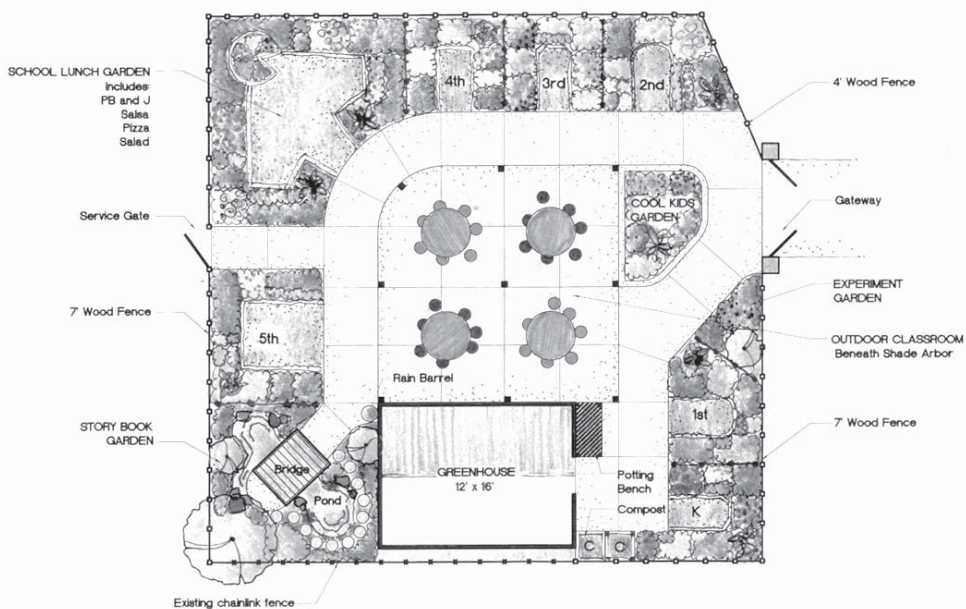
The 2,500 square feet of the Pete and Sally Smith Schoolyard Demonstration Garden will increase the outdoor Michigan 4-H Children's Garden to 27,500 square feet. The garden will connect from the current Demonstration Plaza with a new commemorative brick walkway.

The new Schoolyard Demonstration Garden will model theme gardens that could be created in small spaces at schools. There will be individual gardens for grades K-5 (one for each grade) and seven new theme areas: Container Garden, School Lunch Garden with a picnic table, Storybook Garden with a reading area, School Experiments Garden, Cool Kid Plants Garden, New Idea Garden, and a Composting Garden.



Margaret Marshall Murdoch made a gift in memory of her sister and brother-in-law Sally and Pete Smith (top and bottom left) to create a new theme garden in the outdoor Michigan 4-H Children's Garden. Also pictured is Margaret and Sally's sister, Katie Marshall and Ruthella Kamerleing (top and bottom right) who worked at the Watts-Bar Resort, owned by the Smiths.

The Pete and Sally Smith Schoolyard Demonstration Garden will model theme gardens that could be created in small spaces at schools. Below is a rendering of the new garden by Deb Kinney, MSU Landscape Architect.



These theme gardens will connect to, enhance and expand the curricula for grades K-5. The garden will contain a small greenhouse, a pond, an outdoor classroom and a weather station. It will also integrate technology to expand the hands-on activities in the garden.

"This new space will allow us to directly demonstrate the exciting things that can be done in small spaces at schools," said Norm Lownds, curator of the Michigan 4-H Children's Gardens.

"We will also work directly with teachers and students to co-develop what plants go into the K-5 gardens every year. We are very excited about the opportunities this will provide for greater direct student (and teacher) involvement in what happens at the 4-H Children's Gardens."

Construction on the Schoolyard Demonstration Garden is scheduled to begin this summer in anticipation of the new garden opening in 2008.

Schoen joins 4-H Foundation board

Ronald H. Schoen, of Laingsburg (Shiawassee County), was elected to a three-year term on the Michigan 4-H Foundation board in April.



Schoen is executive vice president and CFO of Accident Fund Insurance Company of America. He oversees Accident Fund's finance and actuarial departments. He has a background in insurance finance and has worked in both the life and property/casualty insurance fields and at the Ernst & Young accounting firm. He is a graduate of DePauw University and Indiana University.

Foundation awards 4-H county innovative grants

The Michigan 4-H Foundation Board of Trustees annually approves the distribution of competitive grant funds to encourage development of innovative 4-H program opportunities in local communities.

Five grant opportunities were offered for the 2006-07 4-H program year. Each of the 11 grant recipients below received a \$500 grant for a total distribution of \$5,500.

Michigan 4-H Legacy Grants

Funded by the Michigan 4-H Legacy Fund.

- **Wexford County's Bent Nails Productions 4-H Puppet Club** worked with CareNET STARs to learn about acting and puppetry. The club built a stage, made props, purchased and made puppets, and performed skits for peers about making positive choices. They performed at a community event, at after-school programs and for church youth groups.

- **Leelanau County's Chameleon 4-H Club Tulip Tree Project** teaches children about the various bulbs and types of flowers. The club planted tulip bulbs with youth at the Leelanau Children's Center. Participants learned how to relate to younger children and explain directions clearly. They saw the value of their contributions to the kids and will learn the significance of giving back to their community.

- **Isabella County's Natural Helpers** program is in its 10th year of active programming at Beal City High School and Mount Pleasant High School for the 2006-07 school year. Natural Helpers identifies

unofficial networks of peers and adults that teens turn to when in need and provides training and support to young people and adults who are already serving as helpers.

- **The Roscommon County 4-H Horse Enrichment Project** furthers horse science education with the Horse Learning Laboratory Kit purchased with this grant. The kit helps older youth to prepare for events such as horse bowl and hippology contests and also helps 5- to 8-year-olds begin to learn about horses.

4-H On-Target Grant

Funded by Michigan 4-H Foundation immediate past president Thomas Cobb.

- **St. Clair County's From the Forest to the Table** program exemplifies the proper harvesting, field dressing and processing of white-tailed deer and small game animals for youth aged 12 to 19. The project provided an experience to encourage participation in outdoor activities while promoting the standards of safety, sportsmanship, ethical behavior and conservation.

NorthStar Cooperative 4-H Dairy Science Grants

Funded by a gift from NorthStar Cooperative, Inc.

- **Lapeer County's New Moo Project** helps educate the New Moo Crew 4-H Club about research-based facts about dairy cattle, careers in the dairy industry and dairy foods through hands-on learning activities with the Dairy Learning Laboratory Kit funded by this grant.

- **Menominee County's Expanding Dairy Knowledge** teaches 4-H



Wexford County's Bent Nails Productions 4-H Puppet Club was one of the Michigan 4-H Legacy Grant recipients. The club members learned about acting and puppetry and performed skits for peers.

Dairy Club members all aspects of the dairy project, including parts of the cow, breeds, dairy products and byproducts, the wide scope of the dairy industry, farm management and more with the Dairy Learning Laboratory Kit funded by this grant.

4-H Educational Garden Grants

Funded by the Albert A. Albright Memorial Fund.

- **The 4-H Heritage Garden at Springfield Oaks in Oakland County** allows members of the 4-H Club GROW (Gardeners Restore Our World), with the help of Master Gardeners, to create a garden resembling those of the late 1800s. Youth researched, designed and maintain the garden during public events and teach youth about gardening.

- **The Gratiot County Community Garden** is a joint effort with Gratiot County 4-H and the Gratiot County Juvenile Office to provide at-risk and adjudicated youth aged 11 to 17 with com-

munity service and learning opportunities.

Land O'Lakes 4-H Citizenship and Leadership Academy Grants

Funded by a gift from the Land O'Lakes Foundation.

- **In Antrim County's 4-H Citizenship Academy**, youth learn about local government, how it affects them and how they can make a difference in their communities as participants. Youth participated in six, two-hour sessions, spent a day at the Antrim County building with county commissioners and attended 4-H Capitol Experience in Lansing.

- **Youth Leadership Gratiot** is a series of four daylong sessions that allows Gratiot County youth to learn about the county, understand how ideas and issues are created and solved, and open doors for youth within the county. Youth will participate in a county tour and history lesson, learn about county youth services, learn interviewing and resume-building skills, and create a poster about the pros and cons of the community based on their research findings.

Kettunen Center arboretum gains new gazebo

Next time you're at Kettunen Center, look for a new gazebo on the north end of the Ada May and Webb Harwood Learning Landscape Arboretum.

The gazebo is sponsored by Polly and David Diehl, of Holland, and Polly's brother and sister-in-law, C. Fred and Mary Jo Gerlach, of Athens, Ga. It is a part of the northern arboretum expansion sponsored by a portion of the estate gift from Helen Stophlet and her sister, Mary Kelsey, which will include another demonstration island featuring native Michigan shrubs and trees.

Polly Diehl has been a Michigan 4-H Foundation trustee since 1989. She chairs the foundation's facilities committee and is a former president of the foundation.

"The gazebo is in memory of both our parents, Carl S. and Francis M. Gerlach, and our grandmother Ruth D. Morley," Diehl said.

"Both my father and grandmother spent their lives teaching. My father was a landscape architect, a Michigan State University graduate, and he taught at MSU from 1937 to 1973. My grandmother was also an MSU grad and spent her life in education and Extension. That's why to me and my brother the gazebo seemed appropriate.

"It was important to us because of our connection to education and MSU Extension. This idea was low-maintenance with plants native to Michigan. That's what an



Polly and David Diehl and Polly's brother and sister-in-law, C. Fred and Mary Jo Gerlach, sponsored a new gazebo in the Ada May and Webb Harwood Learning Landscape Arboretum at Kettunen Center.

arboretum does, and that's the way our dad did things," she said.

The gazebo will provide a place for educational programs and for guests to rest and enjoy nature while walking the trails at Kettunen Center.

The structure is 20 feet across with eight sides and a field-stone base and two front pillars facing the arboretum. The gazebo features a large green 4-H clover in the middle of the concrete floor. Visible from the gazebo is the wetland area behind it

and, in the distance, the Blanchard Bird Observation Station.

"The gazebo is the most striking feature of the revitalized arboretum and is located on a hill on the northern edge overlooking the whole arboretum," said John Grix, Kettunen Center director. "This space will not only provide a welcome resting and viewing spot for our guests but will serve as an educational station for 4-H and Elderhostel programs."

Are you age 70½ or older?

For the 2007 tax year, qualifying donors can reduce the amount of taxes paid on an annual IRA distribution by making a special gift to Michigan 4-H to establish or increase an endowed fund, sponsor a volunteer training workshop or simply make a generous annual gift.

For donors aged 70½ or older who have traditional IRA accounts, the Pension Protection Act of 2006 allows you—in tax years 2006 and 2007 only—to make a gift to a charity by transferring an amount directly from that IRA to that charity and thereby reducing your taxable income for the current tax year.

How, why and key notes:

- Instruct your IRA custodian to distribute a gift amount directly to the Michigan 4-H Foundation. The entire gift amount qualifies as a charitable distribution.
- The gift amount is not included in a donor's personal income for federal taxes.
- The gift amount can count toward required minimum IRA distribution for the tax year.
- Distribution cannot be considered an income tax charitable deduction. The gift is considered a tax-free gift because the donor doesn't pay taxes on the distribution if it's made directly to a charity.
- Generally, TIAA-CREF accounts do not apply unless they are in the form of a traditional IRA.

For more detailed information on how to make an IRA charitable rollover gift to the Michigan 4-H Foundation, call (517) 353-6692.

Remember, this opportunity ends December 31, 2007!

Fishing pier extended at Kett



This spring the Kettunen Center fishing pier was extended an additional 15 feet into Center Lake, making it possible to fish from both sides of the pier. The pier is used for 4-H programs such as the 4-H Learning Science through the Arts Camp (pictured above) and by guests for recreational purposes. The pier extension was funded by estate gifts from sisters Helen Stophlet and Mary Kelsey.

Collins establishes 4-H horticulture endowment

William and Ruth Collins, of Tempe, Ariz., recently established a new endowment to support 4-H horticulture programs.

William (Bill) Collins was a Montana 4-H member and received his bachelor's degree in dairy husbandry from Montana State University and later his master's degree in animal husbandry and artificial insemination from Cornell University.

He worked as the Macomb County Michigan State University Extension dairy agent from 1962 to 1965 and then as 4-H agent from 1965 until he retired in 1981.

"I was a 4-H member and an FFA member when I was a junior and senior in high school. The rest of the time my involvement in 4-H was as an agriculture agent before I became a 4-H agent," Collins said.

"There were two active 4-H agents, Marie Remer and myself. I worked with her in a gardening project to get elevated gardens for the handicapped. My emphasis was with livestock and gardening," he said. "I enjoyed working with the kids in both livestock and miscellaneous projects — finance, citizenship and so on."

He served on the Michigan 4-H Foundation's facilities committee in the late 1970s. During that time, he helped design the Kettunen Center Improvement Project, the first of two major renovations of the center, which resulted in the construction of an earth-sheltered house for the Kettunen Center director.

Collins has been a Michigan 4-H Foundation donor since 1974. He was one of the first to sponsor a commemorative brick at the Michigan 4-H Children's Gardens and now has bricks at Kettunen Center as well.

"It hit me that gifts are appropriate, and I thought I could pull together a larger amount to give to horticulture," he said.

To recognize his interest in perpetual support for statewide 4-H horticulture programs, he and his wife created the **William J. and Ruth D. Collins Endowment** to provide annual support for general 4-H horticulture programs or initiatives that will support and advance volunteer-led programming in 4-H youth horticulture and gardening projects.

Specifically, the endowment will provide 4-H horticulture mini-grants or support for 4-H volunteer training at Kettunen Center in the

area of horticulture. When funds allow, additional support may also fund annual programming in the Michigan 4-H Children's Gardens.

"Because of my involvement with 4-H at Kettunen Center, Kettunen Center is included as part of the endowment," Collins added.

A 4-H horticulture mini-grant will be offered for the 2007-08 4-H program year. The grants are to stimulate county 4-H programs in horticulture and plant science.



William J. and Ruth D. Collins (above) recently established an endowment in their names to provide horticulture mini-grants to 4-H clubs.

Calendar

June 20–22—4-H Exploration Days. This annual event brings over 2,000 young people to MSU. The State 4-H Awards Assembly will be June 21. For details, visit 4-H online at <http://web1.msue.msu.edu/cyf/youth/expodays.html>.

June 24–29—Intergenerational Elderhostel Program at Kettunen Center. Grandparents and grandchildren enjoy educational learning opportunities together. Call (231) 829-3421 for details.

June 30—Gift deadline for 2006-07 fiscal year and *Campaign for 4-H credit*.

July 8–11—4-H Learning Science through the Arts Camp at Kettunen Center. This camp combines art and science for youth 9 to 14 years old. 4-H and non-4-H youth can attend. Register by June 30. Call (231) 829-3421 for details.

August 10—MSU Garden Day. Featuring nationally known speakers and a chance to participate in a variety of garden workshops at the MSU Horticulture Gardens. For details, visit www.hrt.msu.edu/outreach/GardenDay2007.htm or call (517) 355-5191, ext. 339.

August 24—Deadline for ordering an inscribed brick for fall placement in the Michigan 4-H Children's Garden and/or Kettunen Center. With a gift of \$250, you can make this permanent memorial or tribute. Inscribed brick forms are available at www.mi4hfdtn.org/brick.html or by calling (517) 353-6692.

October 5—Michigan 4-H Foundation annual meeting and Campaign for 4-H recognition.

January 31, 2008—4-H Emerald Clover Society class of 2008 nomination deadline. Visit www.mi4hfdtn.org/ecs or call (517) 353-6692 for details and a nomination packet.

Save the Date: 2008 Former 4-H Workers Reunion!

The tri-annual Former 4-H Workers Reunion is **May 14–16, 2008**, at Kettunen Center for all former 4-H staff members—Extension agents/educators, county directors with 4-H responsibilities, support staff members, program assistants, on-campus specialists, program leaders and others.

Help the organizers build the mailing list by sending names and addresses to reunion contact person Don Jost by e-mail at donjost@hotmail.com or phone at (517) 927-2216. Registration materials will be mailed in January 2008.

VANTAGE

240 Spartan Way
East Lansing, MI 48824-6005
Phone: (517) 353-6692
FAX: (517) 432-3310
URL: <http://www.mi4hfdtn.org>

Vantage is published three times per year for members of the Michigan 4-H Foundation. The foundation uses funds solicited from individuals and organizations to support 4-H youth development programs and train volunteer 4-H leaders throughout Michigan. The foundation also owns and operates Kettunen Center, the state 4-H leadership training facility in Tustin.

The Michigan 4-H Foundation is licensed to solicit charitable gifts by the state of Michigan (MICS 2751). A report containing percentages of charitable contributions expended on program administration and fundraising is available by request.

EXECUTIVE OFFICERS

President
Philip A. Seitz, Hale

Vice President
Jamey T. Fitzpatrick, Lansing

Treasurer
Michael D. McIntyre, Okemos

Secretary
Cheryl N. Booth, Ithaca

Immediate Past President
Thomas H. Cobb, Bloomfield Hills

TRUSTEES

Faye A. Adam, Snover

Jeffrey D. Armstrong, East Lansing

Pamala R. Babbitt, Muskegon

Elaine M. Bristol, West Branch

Sheila M. Burkhardt, Novi

Thomas G. Coon, Williamston

Polly Diehl, Holland

Victor L. Fulgoni III, Battle Creek

Jeremy J. Garrett, LeRoy

Yolanda E. Haynes, Southfield

Smallwood Holoman, Jr., Midland

George E. House, Ada

Rita A. Klavinski, Marshall

Robert J. Patterson, Big Rapids

David L. Porteous, Reed City

David B. Ramaker, Midland

Steven G. Rawlings, Traverse City

Ronald H. Schoen, Laingsburg

Claudia J. Scioli, Ann Arbor

Mary E. Tatter, Watervliet

Wayne H. Wood, Marlette

EXECUTIVE DIRECTOR

Cheryl D. Howell

COMMUNICATIONS MANAGER

Abbey A.W. Miller



Michigan 4-H Foundation
240 Spartan Way
East Lansing, MI 48824-6005

Non-profit Org.
U.S. Postage
PAID
East Lansing, MI
Permit No. 230

In the News

Lownds receives Jane L. Taylor Award

Norman K. Lownds, Michigan 4-H Children's Gardens curator, received the American Horticultural Society's Jane L. Taylor Award on June 1. The award is given for nurturing and inspiring future horticulturists through efforts in children's and youth gardens. Jane Taylor was the first curator of the outdoor Michigan 4-H Children's Garden.

Coon joins National 4-H Council board

Thomas G. Coon, Michigan State University Extension director and Michigan 4-H Foundation trustee, was elected to the National 4-H

Council Board of Trustees. National 4-H Council is the national non-profit partner of the 4-H Youth Development program.

Michigan 4-H volunteer receives national 4-H award

Saginaw County 4-H volunteer and 4-H Emerald Clover Society member **Joan M. Kuhne** received the National 4-H Wildlife and Fisheries Volunteer Award at the North American Wildlife and Natural Resources Conference in March.

Kettunen Center names new marketing coordinator

Jamie Mielke-Mitchell is the Kettunen Center marketing coordinator as of April 16. Mielke-Mitchell first joined the Kettunen Center program staff last fall. She has a degree in environmental education from Central Michigan University.

CORPORATE Clover Club

Thanks to our Corporate Clover Club members!

The Corporate Clover Club is an annual giving program recognizing corporate and business gifts of \$1,000 and above.

Between Mar. 6 and May 31, 2007, corporate gifts were received from:

- International Union, UAW
- Michigan Farm Bureau & Affiliates
- Michigan Herb Associates
- Michigan Milk Producers Association
- Michigan Quarter Horse Association