



# Report to the Membership

Michigan 4-H Foundation  
65th Annual Membership Meeting  
Friday, October 6, 2017



Supporting  
Michigan 4-H  
Youth Development  
to prepare youth  
for meaningful and  
productive lives.

## President's Message to the Membership

Sixty-five years ago the first meeting of the Michigan 4-H Foundation featured a ceremonial signing of the "Founders Scroll" by the six incorporators and charter members.

These business and educational leaders saw the need for an organization "to help procure financial aid for the needs of an expanded 4-H program," as stated in the first meeting minutes of the Friends of 4-H.

Today, we will learn more about the impact Michigan 4-H has on the lives of youth and the need to continue to grow private philanthropy for Michigan 4-H.

As a 4-H volunteer, I have seen the difference 4-H makes in young people. 4-H grows curiosity, dreams, engaged citizens, a healthier future generation and compassionate and caring adult role models. Through 4-H, youth explore science, learn leadership, citizenship and healthy lifestyles; and develop entrepreneurship, financial and workforce preparation skills – skills to help youth succeed in life.

We will celebrate the investments many donors have made in ensuring these opportunities continue for Michigan's youth. And hopefully, encourage all of us to continue to make these opportunities possible for more young people.

We also want to thank you for helping to achieve another million for Michigan 4-H's future! With your support, the *Campaign for Michigan 4-H's Future* has achieved 81% or \$10.26 million of our \$12.5 million campaign goal. We have 15 months and \$2.4 million more to go.

Yours in 4-H,



A handwritten signature in black ink, appearing to read 'Douglas E. Lewis', written over a light blue circular stamp.

Douglas E. Lewis, President

## Michigan 4-H Foundation Annual Membership Meeting October 6, 2017, 10–11:45 a.m.

---

**Welcome & Introductions** – *President Douglas E. Lewis*

**American and 4-H Pledges** – *Youth Trustees*

**2016-17 Year In Review** – *President Douglas E. Lewis*

### 4-H Grows Here in Michigan

*Dr. Jacob DeDecker, Associate State 4-H Leader and*

*Amanda Masters, Assistant Director of Development for 4-H*

- Michigan 4-H Grows – 4-H Highlight Video
- 4-H Grows: Science Literacy
- 4-H Grows: Healthy Living
- 4-H Grows: Workforce Readiness & Financial Literacy
- 4-H Grows: Leadership & Civic Engagement
- 4-H Grows: Volunteer Development

### Annual Membership Action for the Michigan 4-H Foundation

**Secretary's Report** – *Vice President Sally A. Stuby*

- Approval of minutes from October 7, 2016 annual membership meeting

**Treasurer's Report** – *Treasurer Robert J. Johnson*

- Financial overview
- Introduction of auditors and presentation of the Michigan 4-H Foundation 2016-17 Independent Audit  
*Jeff Fineis, Partner, Andrews Hooper Pavlik, PLC*

**Board Development Committee Report** –

*Trustee Sheila M. Burkhardt, Board Development Committee Chair*

- Trustee Elections

**President Remarks** – *Douglas E. Lewis*

- Trustee Recognition
- Acknowledgements

**Remarks from the Membership**

**Closing Remarks** – *President Douglas E. Lewis*



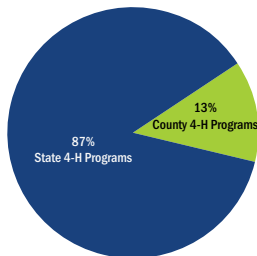
# Michigan 4-H Foundation Financial Summary in Brief

For the years ended June 30, 2017 and June 30, 2016

	JUNE 30, 2017	JUNE 30, 2016
<b>ASSETS</b>		
Current Assets	\$1,018,819	\$499,330
Net Fixed Assets (Primarily Kettunen Center)	2,827,887	2,968,763
Investments and Other Assets	7,512,429	7,145,255
<b>Total Assets</b>	<b>\$11,359,135</b>	<b>\$10,613,348</b>
<b>LIABILITIES AND NET ASSETS</b>		
Current Liabilities	\$206,000	\$216,685
Long Term Liabilities	982,965	908,550
<b>Total Liabilities</b>	<b>\$1,188,965</b>	<b>\$1,125,235</b>
<b>Net Assets</b>	<b>\$10,170,170</b>	<b>\$9,488,113</b>
<b>Total Liabilities and Net Assets</b>	<b>\$11,359,135</b>	<b>\$10,613,348</b>
<b>REVENUES AND SUPPORT</b>		
Kettunen Center Revenue	\$1,201,265	\$1,223,809
Unrestricted	469,148	314,561
Restricted	1,248,695	445,467
<b>Total Revenues</b>	<b>\$2,919,108</b>	<b>\$1,983,837</b>
<b>EXPENSES</b>		
Kettunen Center Operations	\$1,334,963	\$1,303,270
4-H Programs	403,443	642,052
Administration	370,041	522,517
Fundraising	128,604	123,785
<b>Total Expenses</b>	<b>\$2,237,051</b>	<b>\$2,591,624</b>
<b>Change in Net Assets</b>	<b>\$682,057</b>	<b>\$(607,787)</b>

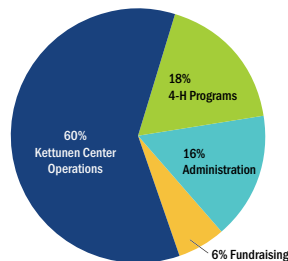
## 2016-17 PROGRAM SUPPORT

Total Grants Distributed: \$403,443



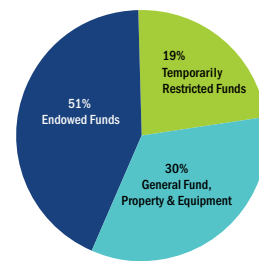
## 2016-17 EXPENSES

Total Expenses: \$2,237,051



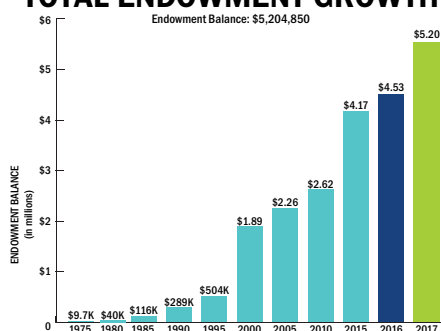
## 2016-17 NET ASSETS

Net Assets: \$10.17 million  
Total Assets: \$11.36 million



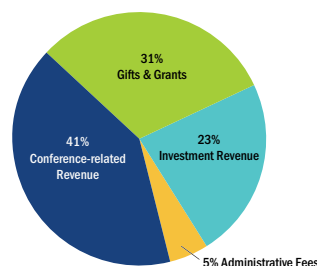
## TOTAL ENDOWMENT GROWTH

Endowment Balance: \$5,204,850



## 2016-17 REVENUE

Total Revenue: \$2,919,108



## Michigan 4-H Foundation Annual Membership Meeting Minutes October 7, 2016

In attendance were 17 trustees, 1 trustee emeritus, 2 honorary trustees, 2 former trustees, 10 members, 3 4-H staff members, 6 foundation staff members and 2 representatives from the audit firm.

President Sheila Burkhardt called the 64th Michigan 4-H Foundation annual membership meeting to order at 10 a.m. at the Henry Center in East Lansing, Mich. The group recited the pledges. President Burkhardt then asked all those present to introduce themselves.

President Burkhardt then presented The Year in Review Address for 2015-16. She was pleased to share highlights of what donor support provided in the past year for Michigan 4-H programs.

- The foundation distributed total grant payments to support state and county 4-H programs of \$587,000 in 2015-16 with an additional \$190,676 granted to match county 4-H endowments for total grant support for the fiscal year of \$777,676.
- As a result of the foundation's county 4-H endowment match campaign, \$788,391 has been raised to grow endowments for 31 county 4-H programs. Seven of these campaigns have raised enough local support to qualify for the maximum foundation match of \$50,000.
- This past year featured significant and much needed facilities improvements with the opening of new bathrooms in the Michigan 4-H Children's Gardens; the addition of archery and firearms ranges at Kettunen Center to support 4-H shooting sports programs; and the installation of a new septic system at Kettunen Center.
- Kettunen Center represents a significant part of the foundation's annual 4-H program support with an annual operating budget of \$1.3 million which brings total 4-H program support in 2015-16 to more than \$2.07 million.
- Kettunen Center hosted 1,405 4-H participants at fourteen 4-H events this year. Their participation was supported by 4-H adult and older teen participant training scholarships that totaled \$76,150 from the foundation.
- 4-H program endowments held by the Michigan 4-H Foundation grew by almost 10 percent, increasing from \$4.17 million to \$4.37 million. This includes 81 fully funded state and county 4-H endowments of which 44 are for county 4-H program support.
- Donors contributed \$791,070 in new gifts and grants to support Michigan 4-H in this past fiscal year, increasing support over last fiscal year by almost \$27,000.
- Since 2011, the Michigan 4-H Foundation has joined Michigan State University in a capital campaign to raise \$12.5 million in support for Michigan 4-H's future.

With donor support, the foundation has achieved 71 percent or more than \$9 million towards this capital campaign goal.

At this time, President Burkhardt introduced Dr. Julie Chapin, State 4-H Leader, to share the program goals for 4-H Leadership and Civic Engagement – one of the campaign priority areas where we have reached the 71 percent mark of the \$500,000 campaign goal.

Dr. Chapin shared that 4-H Leadership and Civic Engagement programs prepare youth to become leaders in a globally connected and multi-cultural world. Our goal as educators is to help youth understand and respect the culture of others; be prepared with the leadership skills needed to respond, as active and engaged citizens, in local and global issues; and to recognize their ability to serve their communities as both leaders and volunteers.

In 2015, nearly 68,000 Michigan youth participated in 4-H activities related to civic engagement, community service and leadership development. Of the 10,000 youth participants engaged in learning experiences and activities specifically designed to increase leadership, civic engagement and cultural competencies: 94 percent indicated they had learned things that would help them make a difference in their communities, 88 percent agreed they could work things out when others didn't agree with them, 86 percent indicated they could run a meeting and 76 percent reported they had gained the communication skills needed to address conflict effectively.

Dr. Chapin then introduced three 4-H programming areas where staff, volunteer and youth partnerships are advancing opportunities for young people to discover and leverage their capacity for community, global and personal leadership through 4-H.

Michelle Neff, Clare County MSU Extension educator, shared the work happening in 4-H youth personal leadership, what we learned from the research conducted by the Midland Legacy Center Research, that confirms the impact of 4-H on the personal development of young people.

Then Janelle Stewart, Lenawee County MSU Extension educator and 4-H State Youth Leadership Council members Emily Kittendorf, and Loren King featured 4-H work happening in youth leadership and community service.

Lastly, D'Ann Rohrer, 4-H educator for 4-H global and cultural education highlighted youth global citizenship and leadership and the opportunities 4-H is providing young people through 4-H international exchange experiences.

President Burkhardt opened the business meeting by inviting Secretary Chapin to present the motion for the approval of the Oct. 2, 2015 annual meeting minutes. Trustee Holoman moved to approve the 2015 annual meeting minutes as presented. Supported by Trustee Lewis; motion carried.

President Burkhardt then asked Treasurer Ron Schoen to present the financial report for fiscal year 2015-16. He reported that total revenues for FY2015-16 were \$1.98 million with 53 percent generated from operations of Kettunen Center; 28 percent from your generous support of 4-H; and 19 percent from administrative office operations. Investment losses reduced fiscal assets this fiscal year by 5 percent. Expenses totaled \$2.83 million with 70 percent spent on program support and 30 percent spent on administration and fundraising. This left net assets at June 30, 2016 of \$9.48 million and total liabilities and net assets near \$10.6 million.

At this time, Treasurer Schoen asked Mr. Jeff Fineis, partner with Andrews, Hooper, Pavlik, to present the foundation's 2015-16 independent audit results.

Mr. Fineis noted that the audit has been reviewed in detail by management and the Finance Committee. He declared a clean, unmodified opinion noting the 2016 financial statements present fairly, in all material respects, the financial position of the Michigan 4-H Foundation as of June 30, 2016, and the changes in its net assets and its cash flows for the year then ended in accordance with accounting principles generally accepted in the United States of America.

He then reviewed the audit, reporting the foundation received \$363,535 in cash and cash equivalents. He noted that investments were valued at \$6.95 million. Current pledges receivables were \$175,338. Total liabilities were \$1.1 million. The total net assets of the Michigan 4-H Foundation at June 30, 2016 were \$9.49 million. Total liabilities and net assets were \$10.61 million. Under the Statement of Activities, Mr. Fineis reported that total revenues and support equaled \$2.17 million and total expenses were \$2.4 million, resulting in a negative change in net assets of (\$220,758). He indicated the details of the investment losses are on page 17 and the footnotes begin on page 10 of the audit report, but there was nothing unusual to report to the membership.

President Burkhardt then introduced Trustee Sally Stuby, Board Development Committee chair. Trustee Stuby noted the foundation's board of trustees has the capacity for 30 members and that we currently have 21 members which will not change if today's election stands as presented.

Trustee Stuby was pleased to bring two new trustee nominations to the membership, one of which was previously elected by the Michigan 4-H Foundation's board, but in need of confirmation by the foundation membership.

Presented for trustee confirmation was Thomas Bosserd, area representative for Halderman Companies. Trustee Stuby also presented a new youth trustee nominee: Emily Kittendorf, Monroe County 4-H'er. Trustee Stuby then presented three trustees for re-election to the board: John Hatfield, Harmony Nowlin and Doug Lewis. She also introduced the new trustee appointed by the Michigan Council of Extension Associations, Sheila Urban Smith. Additionally, she reported that Dr. Jeffrey Dwyer became a permanent trustee Jan. 1, 2016 with his appointment as director of MSU Extension. Dr. Ronald Hendrick also became a permanent trustee as the new dean of the MSU College of Agriculture and Natural Resources.

Trustee Stuby stated that this completed the nominations from the Board Development Committee and then entertained nominations from the membership, and hearing none, proposed a motion to accept the slate of trustees to be confirmed and returning trustees as presented to the Michigan 4-H Foundation membership. Trustee King moved to approve the slate. Supported by Trustee Babbitt; motion carried.

President Burkhardt then introduced Executive Director Cheryl Howell for closing remarks.

Mrs. Howell thanked the membership for the election of new trustees and then asked the membership to thank trustees who were retiring from the board: treasurer Ron Schoen, youth trustee Joe Buis and MCEA representative Dee Miller.


Mrs. Howell thanked President Burkhardt for her leadership of the board and for today's proceedings. She then thanked the entire board of trustees for their volunteer leadership and support. She introduced the Leadership 10 members present and thanked the presenters.

She also recognized the foundation's administrative team for their preparations for the annual meeting: Kathy Kregger, Abbey Miller, Amanda Masters and Julie Arter; along with Chris Gentry and his staff at Kettunen Center and Norm Lownds and his staff at the Michigan 4-H Children's Gardens.

President Burkhardt then asked for comments from the membership. With no further business, President Burkhardt thanked all those in attendance once again for their generosity and continued partnership on behalf of Michigan's young people.

She adjourned the meeting at 11:42 a.m. and asked special guests to join the board for the Clover Citation Luncheon in the Ball Room of the University Club immediately following the meeting.

Respectfully Submitted,



Dr. Julie A. Chapin  
Secretary, Michigan 4-H Foundation



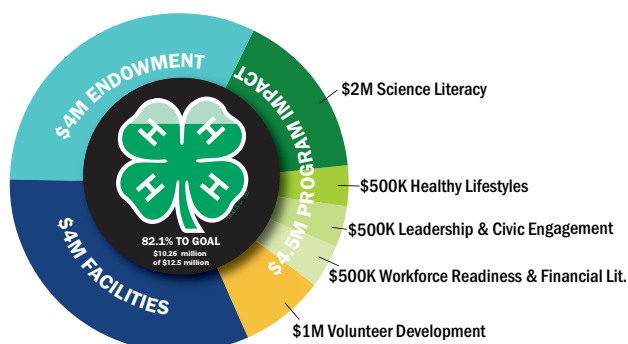
# Michigan 4-H Foundation Campaign Progress Report

As of Sept. 29, 2017

Priority Area	Goal	Total Raised	% to Goal
<b>4-H Program Impact &amp; Reach</b>	<b>\$3.5 million</b>		
Science Literacy	\$ 2,000,000	\$461,764	23%
Healthy Lifestyles	\$ 500,000	\$197,250	39%
Leadership & Civic Engagement	\$ 500,000	\$396,902	79%
Workforce Readiness & Financial Lit.	\$ 500,000	\$111,288	22%
<b>4-H Program TOTAL</b>	<b>\$ 3,500,000</b>	<b>\$1,167,203</b>	<b>33%</b>
<b>4-H Volunteer Development</b>	<b>\$1 million</b>		
4-H Volunteer Recognition	\$ 250,000	\$30,400	12%
4-H Volunteer Training	\$ 750,000	\$159,469	21%
<b>4-H Volunteer Training TOTAL</b>	<b>\$ 1,000,000</b>	<b>\$189,869</b>	<b>19%</b>
<b>Facilities Improvement</b>	<b>\$4 million</b>		
Kettunen Center	\$ 3,000,000	\$230,767	8%
Michigan 4-H Children's Gardens	\$ 1,000,000	\$1,304,892	130%
<b>Facilities TOTAL</b>	<b>\$ 4,000,000</b>	<b>\$1,535,658</b>	<b>38%</b>
<b>Endowment</b>	<b>\$4 million</b>		
4-H Endowment Match	\$ 1,000,000	\$921,302	92%
County 4-H Endowments	\$ 1,000,000	\$1,014,815	101%
State 4-H Endowments	\$ 500,000	\$237,679	48%
Kettunen Center Endowment	\$ 500,000	\$112,970	23%
Michigan 4-H Children's Gardens Endow.	\$ 1,000,000	\$956,450	96%
<b>Endowment TOTAL</b>	<b>\$ 4,000,000</b>	<b>\$3,243,217</b>	<b>81%</b>
<b>CAMPAIGN PRIORITY TOTAL</b>	<b>\$12,500,000</b>	<b>\$6,135,947</b>	<b>49.1%</b>
<b>Annual Fund</b>			
Other 4-H Programs (Restricted)		\$852,767	
Annual Fund (Unrestricted)		\$2,676,649	
<b>Annual Fund TOTAL</b>		<b>\$3,529,416</b>	
<b>CAMPAIGN CASH TOTAL</b>		<b>\$9,665,363</b>	<b>77.3%</b>
<b>Planned/Deferred Gifts TOTAL</b>		<b>\$597,000</b>	
<b>COMPREHENSIVE CAMPAIGN TOTAL</b>		<b>\$10,262,363</b>	<b>82.1%</b>

## CAMPAIGN PRIORITY AREAS

Campaign Goal: \$12.5 million





## 2016-17 Support for Michigan 4-H

### State and County 4-H Programs

Michigan 4-H Youth Development Programs received foundation grants this past fiscal year totaling \$403,443, of which 87% or \$352,896 was granted to support statewide programs and 13% or \$50,547 was granted to support county 4-H programs. An additional \$241,170 was granted to match county 4-H endowments for total grant support for the fiscal year of \$644,613.

As a result of the foundation's county 4-H endowment match campaign, \$925,524 has been raised to grow endowments for 31 county 4-H programs. Nine of these campaigns have raised enough local support to qualify for the maximum foundation match of \$50,000 and all 31 counties met the \$10,000 endowment minimum.

The endowment portfolio at June 30 was valued at \$5.20 million, a 15 percent increase from the \$4.53 million last year. This resulted in endowments providing \$103,818 of the support available to fund the annual grant for 4-H programs.

The endowment portfolio currently includes 91 state and county 4-H endowment funds of which 49 are for county 4-H program support.

The foundation serves as an investment manager for counties, holding 14 agency accounts for support of county 4-H programs and the 4-H staff association investment fund.

The Michigan 4-H Foundation also provides subsidies to reduce the cost for participants of 4-H volunteer and youth development events held at Kettunen Center. This past year, that support totaled \$73,586, made possible by gifts and grants from foundation endowments, individual donors and these corporate and organizational partners: Community Foundation of Southeast Michigan, Hal and Jean Glassen Memorial Foundation, GreenStone Farm Credit Services, Michigan Milk Producers Association, Michigan Pork Producers Association and the United Dairy Industry of Michigan.

### Kettunen Center

Kettunen Center operational costs were \$1.33 million for FY2016-17, which represent a slight increase in operational costs over the previous fiscal year.

The facility hosted 12 program events for 4-H that attracted 1,320 participants. In addition to hosting 4-H events, Kettunen Center was also used by another 173 groups who brought 8,102 participants to the facility.

Kettunen Center also annually delivers outdoor and environmental educational programs to schools, the larger community and other groups that engaged 1,978 youth and 1,003 adults for a total reach of 2,981 participants.

The shooting sports ranges were dedicated in August 2016 to support 4-H shooting sports and other groups. To improve guest experiences at Kettunen Center, the board has approved funding for the replacement of beds and furniture in Aspen, Birch and Cedar lodges which should be completed by the end of 2017. Funding was also provided to replace both the dining room and meeting room seating. Additionally, Kettunen Center guests may enjoy a new outdoor gathering area with a fire circle in the rain garden area.

### Michigan 4-H Children's Gardens

The 2016-17 Michigan 4-H Children's Gardens season launched in mid-March with the Butterflies in the Garden exhibit. The Indoor 4-H Children's Garden and butterflies exhibit was visited by school groups and general garden visitors from March 15 to April 30. The garden had nearly 6,000 visitors in these six weeks. We thank MSU Federal Credit Union for continuing to sponsor this annual exhibit and the accompanying programming.

The gardens' Seeds of Science field trips were scheduled almost every day between May 1 and June 14. As part of this learning experience, students spend three full days in the 4-H Children's Gardens where they are immersed in hands-on activities. A new laptop computer and Smart Board projector were added to our educational tools through support from Michigan Agricultural Commodities. Additionally, a new state-of-the-art interactive projector will be installed this fall in the Curiosity Classroom allowing for exciting interactive opportunities using this new technology.

The new family bathrooms continue to be a welcome addition for garden visitors. Renewal and upkeep of the spitting frogs, Liberty Hyde Bailey Garden and the Cottage Garden were completed this summer. Additional maintenance projects are planned for this fall and next spring in preparation for the gardens' 25th anniversary next year. Three large projects which will require new funding include the Monet Bridge, Monet Pond and tree house.

## Board of Trustees

### PRESIDENT

Douglas E. Lewis  
Director of Student Legal Services,  
University of Michigan  
*Milan*

### VICE PRESIDENT

Sally A. Stuby  
*Centreville*

### TREASURER

Robert J. Johnson  
Internal Audit Manager,  
MSU Federal Credit Union  
*St. Johns*

### SECRETARY

Julie A. Chapin  
State 4-H Leader and Director,  
MSU Extension Institute for  
Children and Youth  
*Portland*

### IMMEDIATE PAST PRESIDENT

Sheila M. Burkhardt  
Senior Director of Member  
and Government Relations,  
Michigan Milk Producers Association  
*Novi*

### TRUSTEES

Alondra G. Alvizio  
Wayne County 4-H'er  
*Detroit*

Pamala R. Babbitt  
*Muskegon*

Mary F. Draves  
Global Director of  
Remediation and Restoration,  
The Dow Chemical Company  
*Midland*

Jeffrey W. Dwyer  
Director, MSU Extension  
*Munising*

John D. Hatfield  
*Midland*

Ronald L. Hendrick  
Dean, College of Agriculture  
and Natural Resources,  
Michigan State University  
*East Lansing*

Smallwood Holoman, Jr.  
*Midland*

Jennifer Vincent Kiel  
Editor, Michigan Farmer  
*St. Johns*

Loren G. King  
St. Joseph County 4-H'er  
*Burr Oak*

Emily E. Kittendorf  
Monroe County 4-H'er  
*Milan*

Sheila Wade Kneeshaw  
Woman's National Farm & Garden  
Association, Michigan Division  
*Detroit*

Ian G. McGonigal  
Senior Vice President – Regional Sales,  
GreenStone Farm Credit Services  
*Byron Center*

Sheila Urban Smith  
4-H Extension Educator,  
MSU Extension  
*Williamston*

Michael T. Wehner  
Vice President of Finance and Treasurer,  
Cooperative Elevator Company  
*Pigeon*

### TRUSTEES EMERITI

Faye A. Adam  
*Snover*

Raymond L. Bollaert  
*Yale*

Alan W. Ott  
*Midland*

Ronald H. Schoen  
*Okemos*

### HONORARY TRUSTEES

Donald R. Jost  
*Holt*

Russell G. Mawby  
*Augusta*

Sandra Clarkson Stuckman  
*DeWitt*

Michael J. Tate  
*Pullman, Washington*

## Staff Members

### MSU EXTENSION

Julie A. Arter  
*Finance Director*

Kathy L. Kregger  
*Administrative Secretary*

Amanda M. Masters  
*Assistant Director of Development, 4-H*

Abbey A. Miller  
*Communications Manager*

Bridget L. Paff  
*Director of Development, MSU Extension*

### KETTUNEN CENTER

Christopher M. Gentry  
*Kettunen Center Director*

Nicole Coats-Quales  
*Business Development Manager*

Lauren E. Heilman  
*Business Manager and  
Human Resources Coordinator*

Mary Holmes  
*Housekeeping Manager*

Diana Horton  
*Food Service Manager*

Laura Jacobson-Pentces  
*Educational Program Coordinator*

Jamie Mielke-Mitchell  
*Operations Manager*

Steve Neuman  
*Maintenance & Guest Services Manager*

### MICHIGAN 4-H CHILDREN'S GARDENS

Norman K. Lownds  
*Curator*

Jessica R. Wright  
*Educational Program Coordinator*



Michigan 4-H Foundation  
Justin S. Morrill Hall of Agriculture  
446 West Circle Drive, Room 160  
East Lansing, MI 48824  
Phone: (517) 353-6692  
Fax: (517) 355-6748  
Email: [info@mi4hfdtn.org](mailto:info@mi4hfdtn.org)  
Web: [www.mi4hfdtn.org](http://www.mi4hfdtn.org)

## About the Michigan 4-H Foundation

The Michigan 4-H Foundation is a not-for-profit 501(c)(3) organization dedicated to encouraging and supporting Michigan 4-H Youth Development to prepare youth from all segments of society for meaningful and productive lives. The Michigan 4-H Foundation seeks, manages and distributes support from private individuals, organizations, foundations and corporations to support the mission and vision of Michigan 4-H Youth Development.